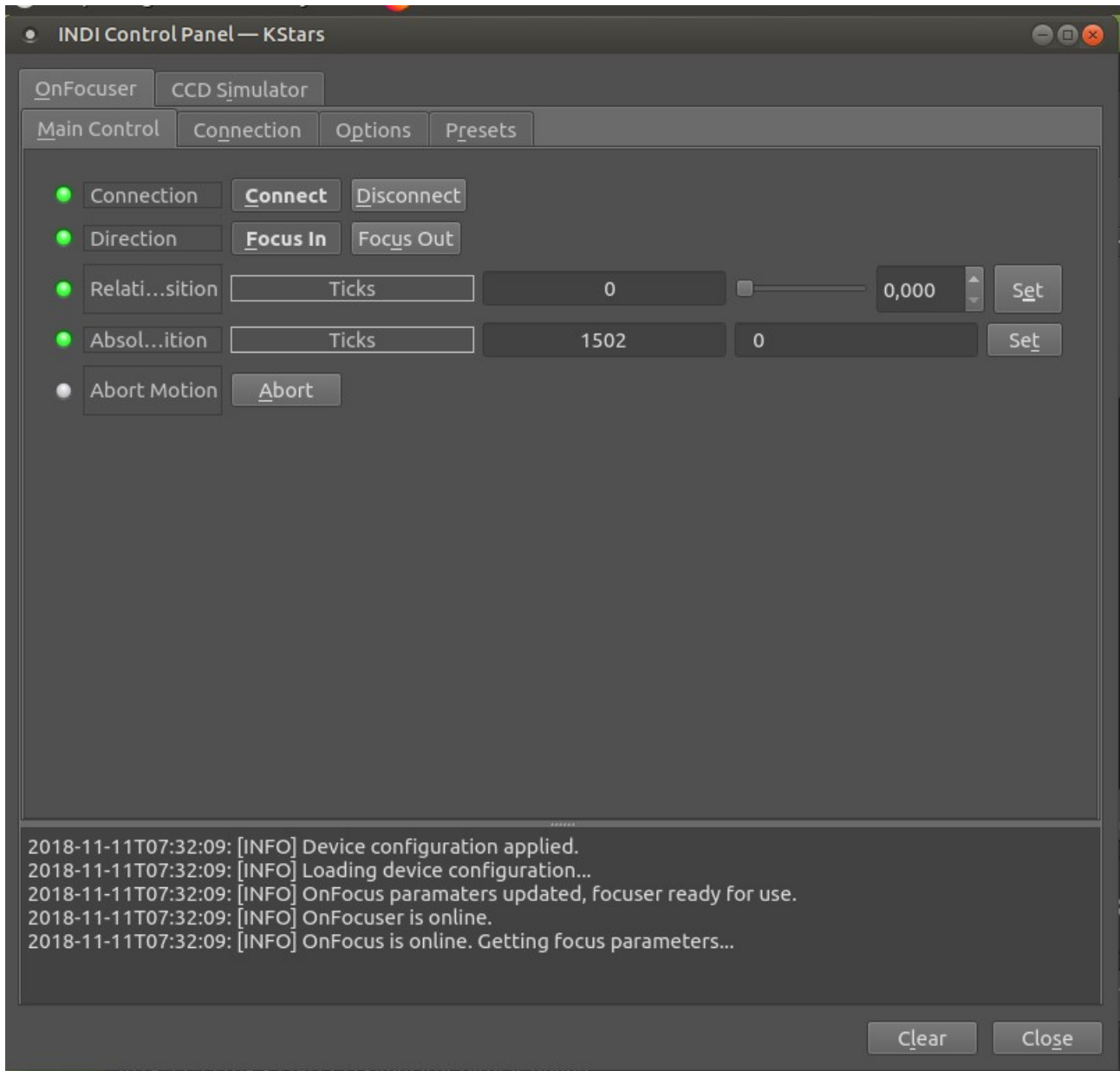


# OnFocus Driver

## Main TAB

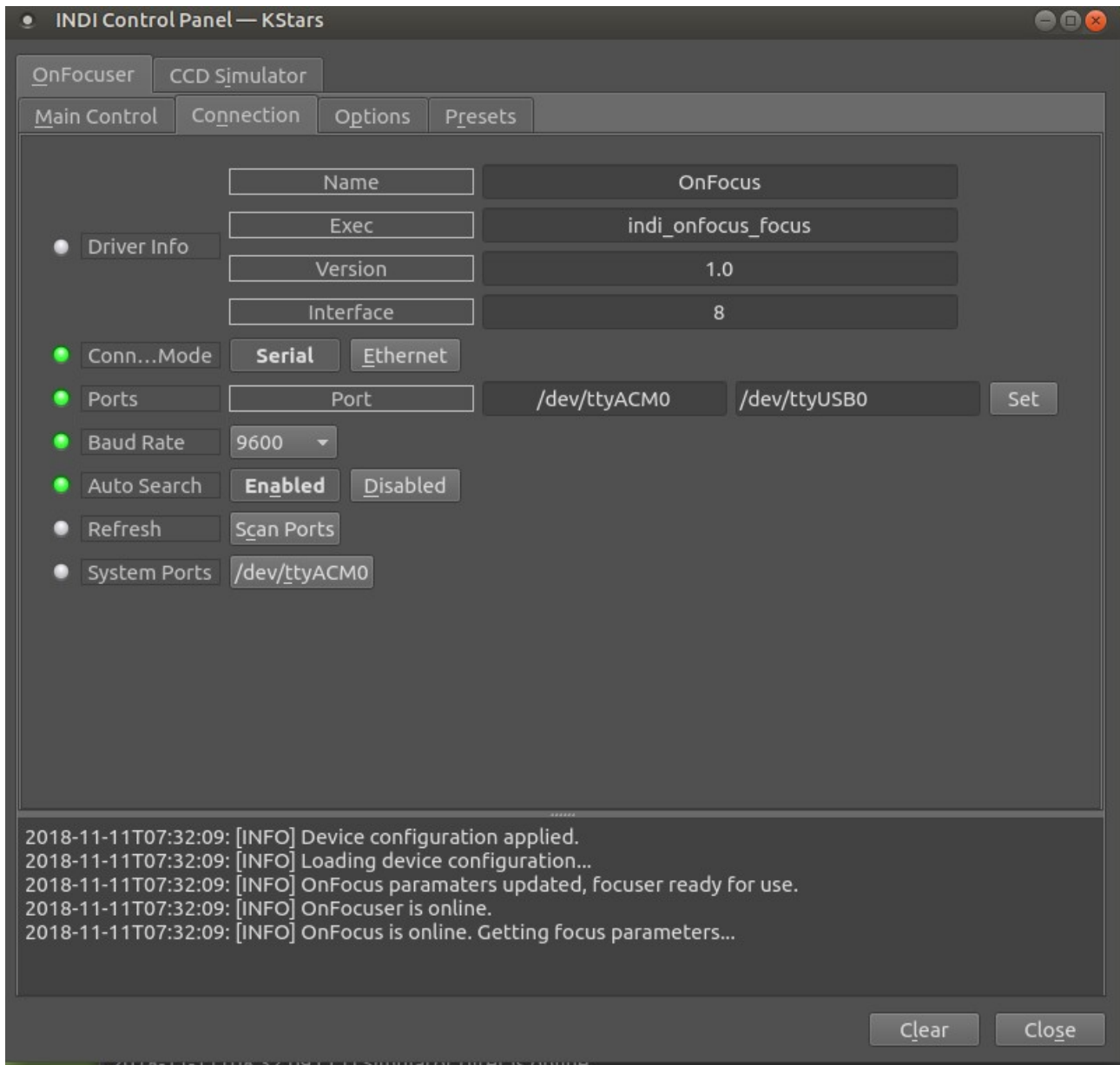
Supports relative and absolute movement

Focuser movement can be aborted with the ABORT key



## Connection TAB

Standard properties.



## Options TAB

Position: to set the maximum outward position. (Must be  $\geq$  current position)

Zero Position: will set the current focus position to 0

INDI Control Panel — KStars

OnFocuser CCD Simulator

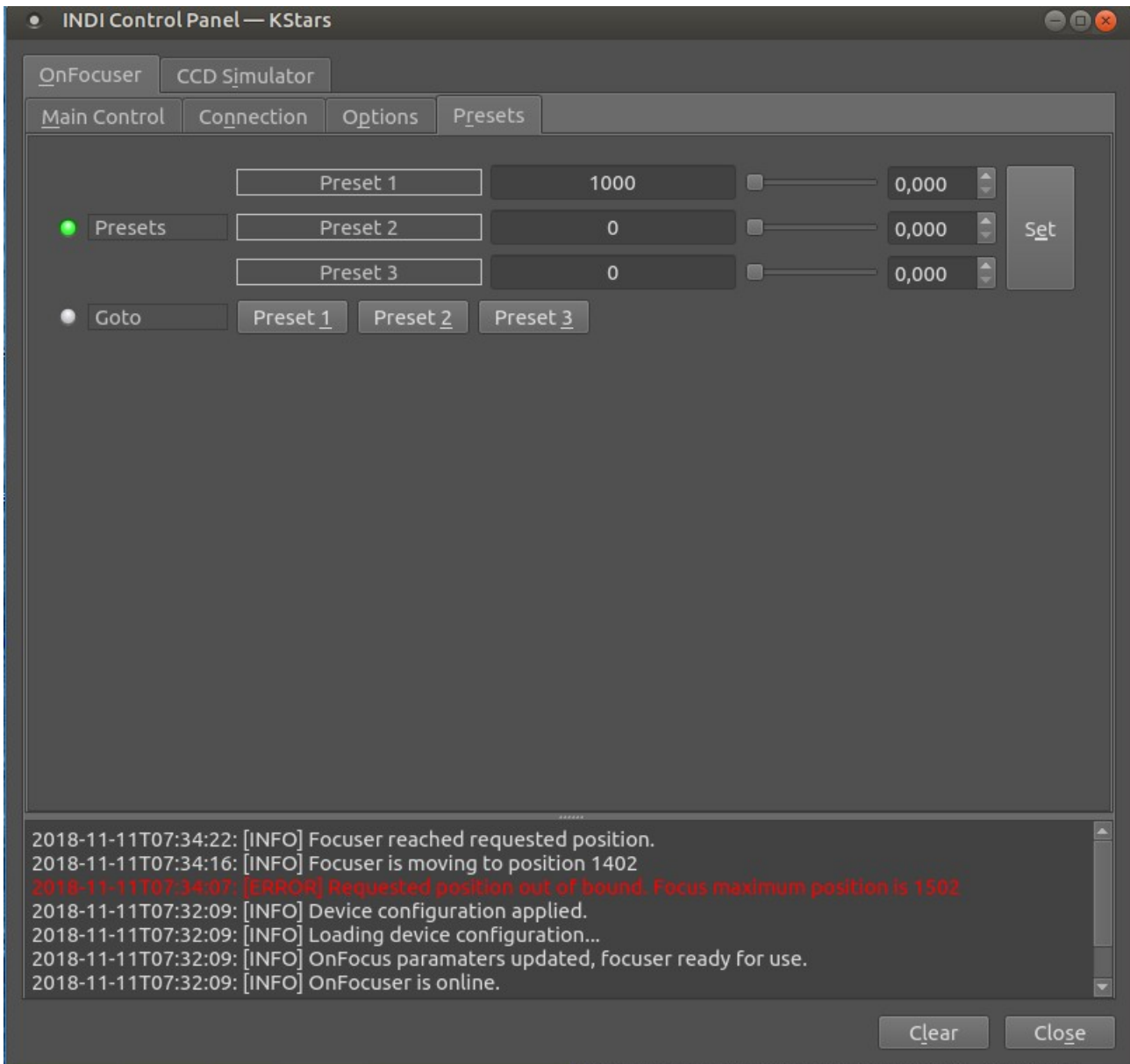
Main Control Connection Options Presets

- Debug
- Polling
- Configuration
- Joystick
- Position
- Zero Position

2018-11-11T07:34:22: [INFO] Focuser reached requested position.  
2018-11-11T07:34:16: [INFO] Focuser is moving to position 1402  
2018-11-11T07:34:07: [ERROR] Requested position out of bound. Focus maximum position is 1502  
2018-11-11T07:32:09: [INFO] Device configuration applied.  
2018-11-11T07:32:09: [INFO] Loading device configuration...  
2018-11-11T07:32:09: [INFO] OnFocus paramaters updated, focuser ready for use.  
2018-11-11T07:32:09: [INFO] OnFocuser is online.

## Presets TAB

Possibility for 3 presets. (Do not forget to save config when these are changed)



Ekos — KStars

**Focuser**

Focuser: OnFocuser    Focus In    Focus Out

Ticks: 1402    0    Set

Start: Auto Focus    Framing    Capture

Settle: 0,000    Stop

**CCD & Filter Wheel**

CCD: CCD Simulator    Exp: 1,000

Bin: 1x1    Gain:    ISO:    Filter: Red

FW: CCD Simulator    Filter: Red

Effect: --    Frame: Reset

**Settings**

Auto Select Star   
 Sub Frame   
 Full Field  
 Dark Frame   
 Suspend Guiding

Box Size: 64    Max Travel: 10000,00  
Step: 100    Tolerance (%): 1,00  
Threshold (%): 150,00    Algorithm: Iterative  
Frames: 1    Detection: Centroid

**V-Curve**

HFR:    pixels    Relati

2018-11-11T08:34:16 Focusing inward by 100 steps...  
2018-11-11T08:34:07 Focusing outward by 100 steps...  
2018-11-11T08:32:08 Idle.