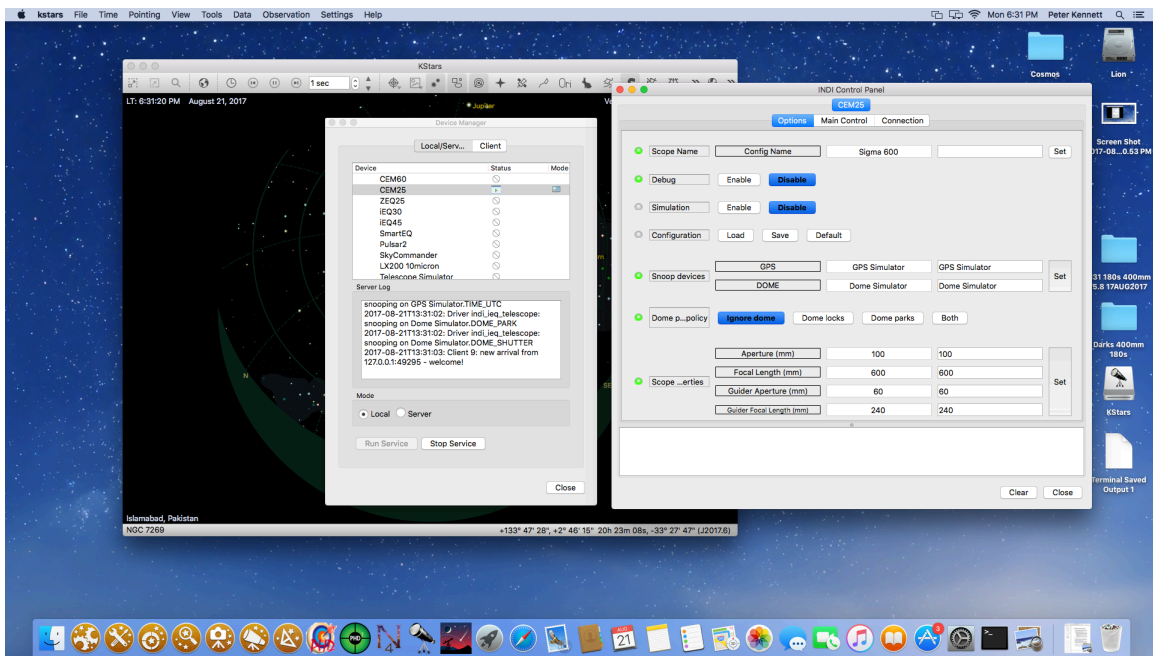
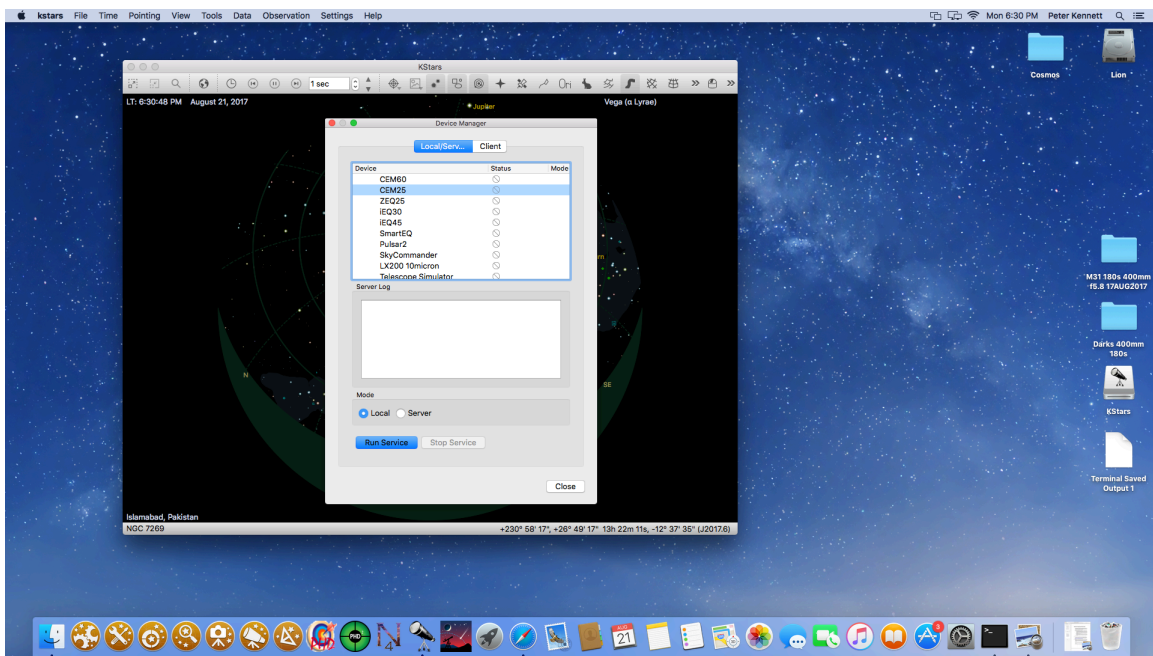


Here's what happens when I try and start KSTARS with my Mac OSX (El Capitan), using a CEM25P. Note: The mount works great with Cloudmaker's Astro telescope and also with SkySafari. I am only having trouble with KSTARS.

I have removed and reinstalled KSTARS three times. This is the latest build from Aug 17.

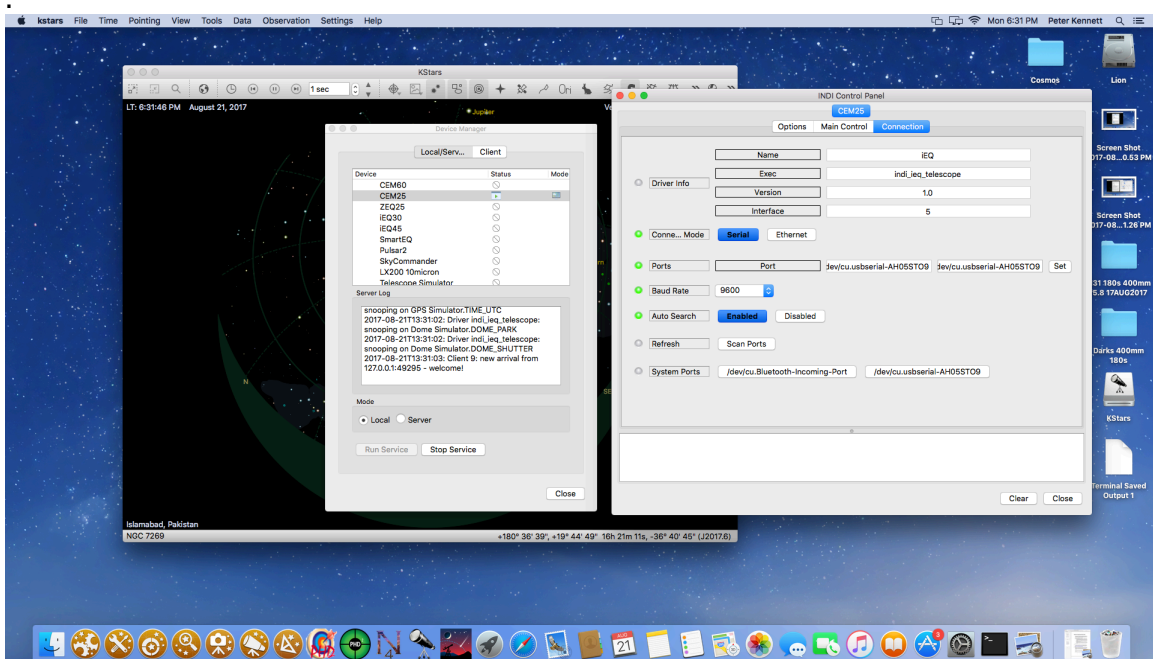


```

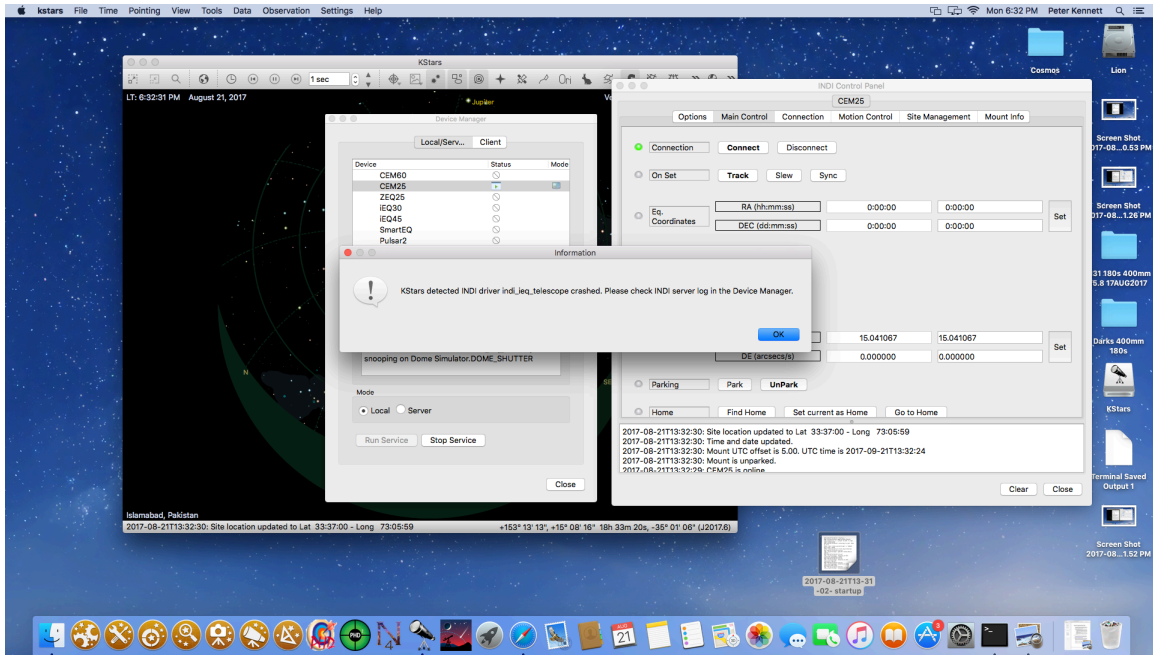
2017-08-21T13:31:02: startup: /Applications/kstars.app/Contents/MacOS/indi/indiserver -v -p 7624 -m 100
-f /tmp/indififo313a358
2017-08-21T13:31:02: listening to port 7624 on fd 3
FIFO: start indi_ieq_telescope -n "CEM25"
With name: CEM25
FIFO: Starting driver indi_ieq_telescope
2017-08-21T13:31:02: Driver indi_ieq_telescope: pid=739 rfd=8 wfd=11 efd=12
2017-08-21T13:31:02: Driver indi_ieq_telescope: snooping on GPS Simulator.GEOGRAPHIC_COORD
2017-08-21T13:31:02: Driver indi_ieq_telescope: snooping on GPS Simulator.TIME_UTC
2017-08-21T13:31:02: Driver indi_ieq_telescope: snooping on Dome Simulator.DOME_PARK
2017-08-21T13:31:02: Driver indi_ieq_telescope: snooping on Dome Simulator.DOME_SHUTTER
2017-08-21T13:31:03: Client 9: new arrival from 127.0.0.1:49295 - welcome!

```

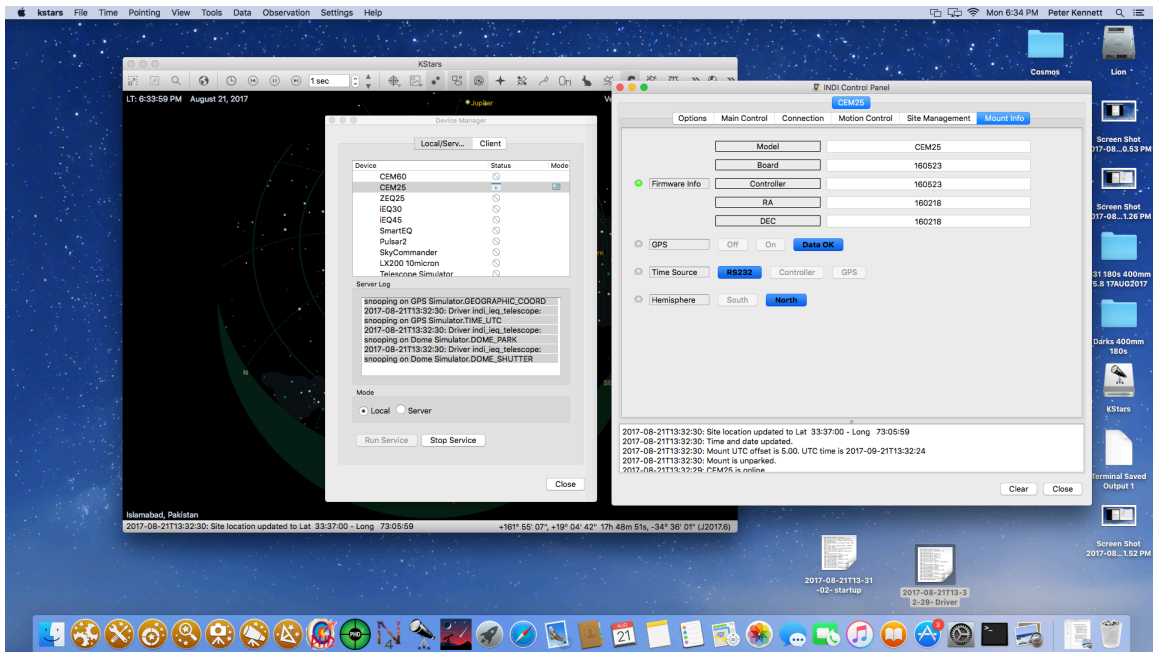
Here I look at the Connection screen and it shows this. Is this correct for the CEM25?
The Driver shows "IEQ". Is that normal for the CEM25?



So I go back and click "CONNECT".



This is the error screen I get.



Here's the message in the Server Log:

```

2017-08-21T13:32:29: Driver indi_ieq_telescope: Handshake lines currently set to 6
2017-08-21T13:32:30: Driver indi_ieq_telescope: stderr EOF
2017-08-21T13:32:30: Driver indi_ieq_telescope: restart #1
Child process 739 died
2017-08-21T13:32:30: Driver indi_ieq_telescope: pid=747 rfd=8 wfd=12 efd=13

```

2017-08-21T13:32:30: Driver indi_ieq_telescope: snooping on GPS Simulator.GEOGRAPHIC_COORD
2017-08-21T13:32:30: Driver indi_ieq_telescope: snooping on GPS Simulator.TIME_UTC
2017-08-21T13:32:30: Driver indi_ieq_telescope: snooping on Dome Simulator.DOME_PARK
2017-08-21T13:32:30: Driver indi_ieq_telescope: snooping on Dome Simulator.DOME_SHUTTER