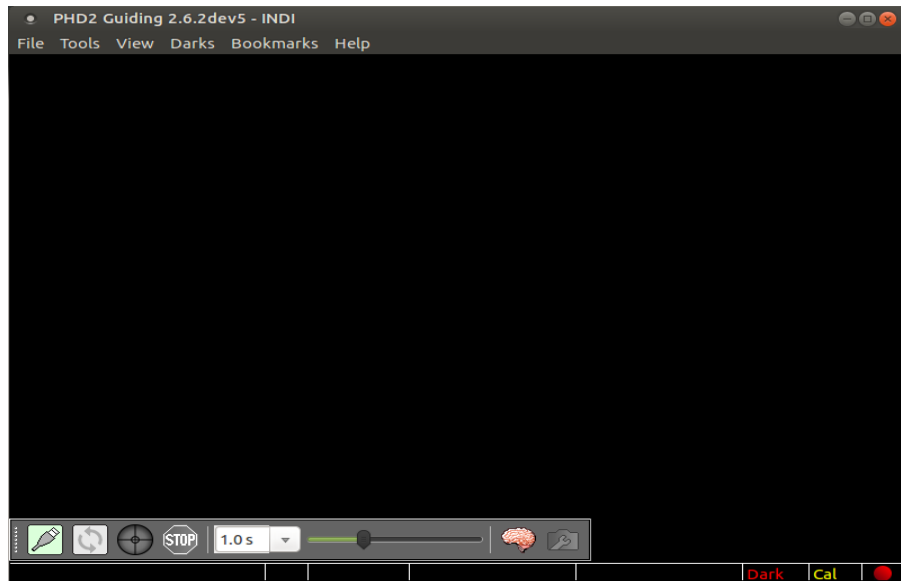
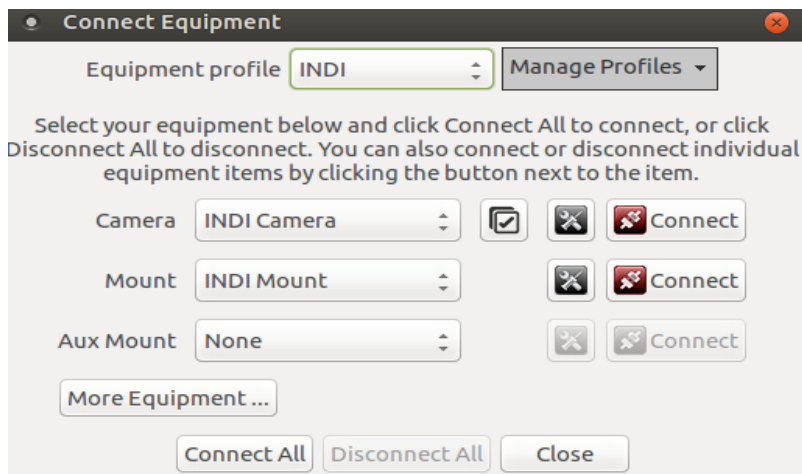


PHD2 for INDI/Ekos and Raspberry Pi3

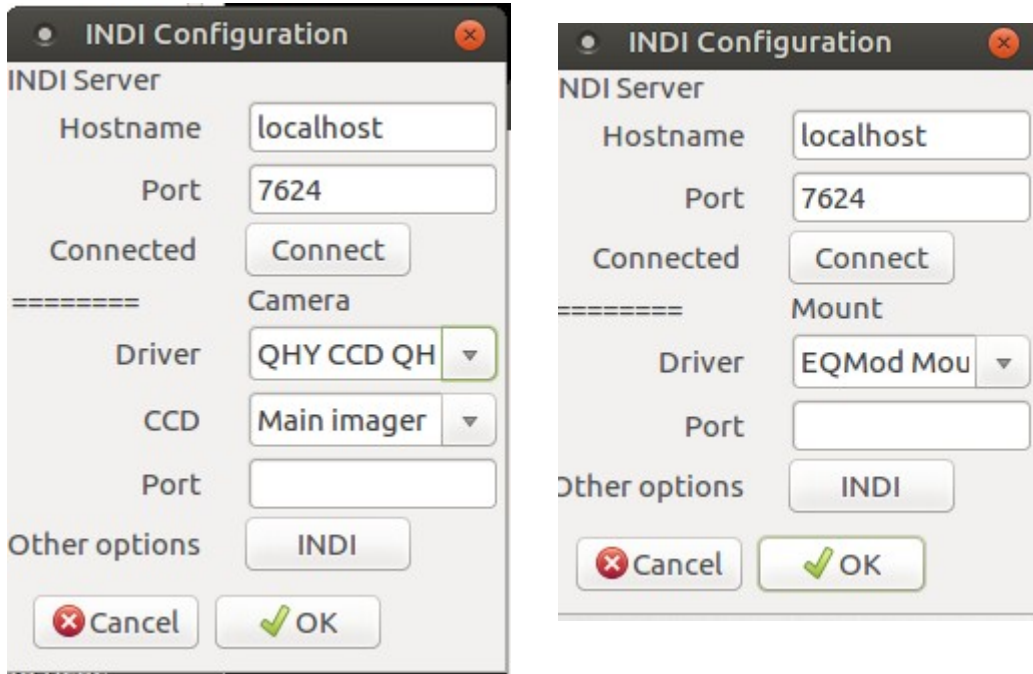


1. I started PHD2 in Terminal but did not connect to anything. I started Kstars/INDI/Ekos and got everything connected and running. It all looks fine and I can do a capture in the Guider Module using the Internal Guider; so it's working.

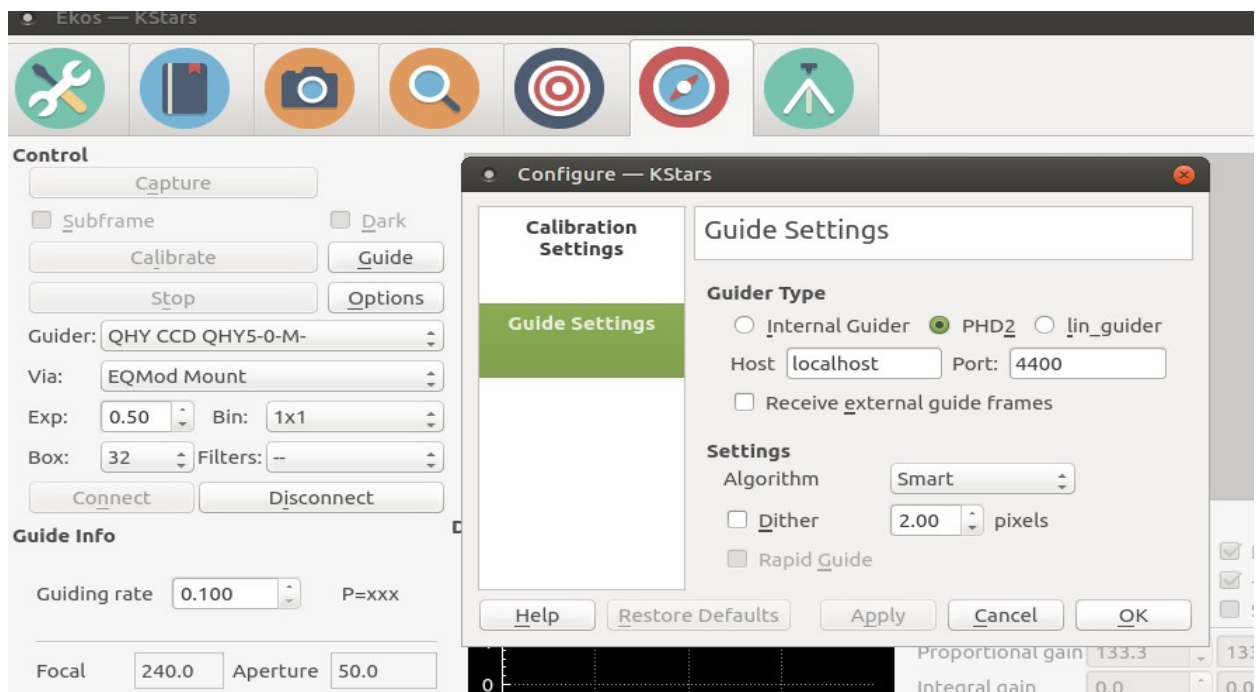
2. Now I went back to PHD2 to connect/configure a camera and mount. Click on the USB icon on the bottom left of the PHD screen. Configured it like you see here.



3. Confirm the camera and mount are set up properly. Clicking on the camera setup icons next to the connect buttons. With INDI server already running and everything connected, this is what I see in the two setup windows. I don't touch anything here. Close these screens and hit "Connect All".



Now I go into the Ekos Guider Module and click on the Options button there near the middle. This is my setup with the Options window open and PHD2 selected.



At this point I hit "OK", close the options window and all looks good.

Notes:

1. I DO NOT start the looping image process from within the PHD control panel. I let Ekos do that when I hit Guide.
2. Start Ekos first so PHD2 sees the drivers
3. Leave everything at the defaults.

I don't know exactly what I did, but I went from everything working fine to losing the PHD connection and nothing working. I think I set the imager to looping from within PHD instead of letting Ekos start it up. From there it was down hill until I closed everything and started over and then it was fine.